

# Contents

|   |           |
|---|-----------|
| <b>STATEMENT BY THE PARISH COUNCIL.....</b>       | <b>2</b>  |
| <b>BRIEF HISTORY OF APPLETON LE MOORS.....</b>    | <b>3</b>  |
| <b>PARISH PLAN STEERING COMMITTEE.....</b>        | <b>4</b>  |
| ACKNOWLEDGEMENTS                                  |           |
| HISTORY OF THE PARISH PLAN PROCESS                |           |
| CONSULTING YOUNG PEOPLE                           |           |
| <b>TIME FOR ACTION.....</b>                       | <b>6</b>  |
| <b>SUMMARY OF QUESTIONNAIRE FEEDBACK.....</b>     | <b>9</b>  |
| DEMOGRAPHICS                                      |           |
| RETAIL SERVICES                                   |           |
| PUBLIC SERVICES                                   |           |
| SOCIAL AND COMMUNITY                              |           |
| <b>VITAL VILLAGES QUESTIONNAIRE FEEDBACK.....</b> | <b>10</b> |
| DEMOGRAPHICS                                      |           |
| COMMUNITY BUILDINGS AND ASSETS ROAD               |           |
| COMMUNITY AND PUBLIC SERVICES                     |           |
| ROAD TRAFFIC                                      |           |
| COMMUNITY ENVIRONMENT                             |           |
| COMMUNITY ACTIVITIES                              |           |
| TRANSPORT   |           |
| ADDITIONAL COMMENTS                               |           |
| <b>ACTION PLANS.....</b>                          | <b>21</b> |
| COMMUNITY ACTIVITIES AND RETAIL SERVICES          |           |
| SPECIAL INTEREST GROUPS                           |           |
| PARISH COUNCIL                                    |           |
| NORTH YORK MOORS NATIONAL PARK AUTHORITY          |           |
| PUBLIC TRANSPORT                                  |           |
| RYEDALE DISTRICT COUNCIL                          |           |

**A STATEMENT BY THE APPLETON LE MOORS**  
**PARISH COUNCIL**

**The Appleton le Moors Parish Council would like to take this opportunity to thank everybody involved in the production of The Parish Plan.**

The very comprehensive Questionnaire circulated to every individual in the Parish provided an ideal opportunity to voice opinions and concern on a substantial range of topics. We would like to thank the seventy percent of people who took the time to fill in the Questionnaire. By doing so you have made your Parish Council aware of your views on many subjects of interest and concern. Without some degree of structured feed back it is very difficult for local democracy to operate.

We would particularly like to express our appreciation of the Parish Plan Steering Committee. This group have given up that most precious of commodities, time. They approached the project in a very professional and enthusiastic manner, keeping the Parish Council fully informed at all stages of the process. They also ensured that all villagers were aware of the progress of the Plan through the medium of three “Open Days” events, five newsletters and a regularly updated section on the Village website.

With the publication of the Parish Plan a framework is in place for parishioners to address the issues from the Questionnaire that concern and interest them.

Residents of Appleton le Moors should now look forward to putting into action some of the conclusions of the report. Certain actions fall within the Parish Council’s remit but the majority are a matter for interested groups or individuals within the Parish to pursue. The Parish Council will do everything within its power to support any initiatives that are for the general good and well being of the Parish, the Village and its inhabitants.

**J. Welburn** (Chairman)

**L. Waines**

**M. Grayson**

**J. Hall**

**M. Smith**

## **A very brief history of Appleton le Moors**

At 400 feet above sea level Appleton stands on Corallian limestone sloping towards the vale of Pickering in the south. The first recorded mention of Appleton le Moors was as 'Apletun' in 1086, although flint tools and arrow heads indicate the presence of people since the last Ice Age. Spaunton Common and around Hamley lane were densely wooded areas. Local place names like 'Cat' and 'Hagg' mean woods or their management. In successive centuries as the village evolved so would its name; Wodapleton, Dweldapleton, Woodapleton to Appleton in the Moors.

Bronze Age farmers are known to have settled here on the fertile free draining soil. At least 8 barrows or burial sites were constructed at the bottom of Appleton Common (where today the road meets the A170.)

2,000 years later the Romano-British occupied the area as evidenced by pottery and coins found in Appleton. A Romano-British burial cyst was unearthed at the northern parish boundary with Spaunton.

In Anglo-Saxon times the settlement became properly organised along the spring line at the south end of the village. Evidence of a mediaeval communal oven and chapel has been discovered. During this period Appleton evolved as single main street; the houses that create the L-shape down to the common are relatively late additions. The term garth, commonly used in the 17<sup>th</sup> and 18<sup>th</sup> centuries, describes the house and its strip of land. Many garths in Appleton are the same length, extending to the back lanes. Their uniform length gives the village its very regular, planned shape.

Outlying farms and houses in the Parish tend to have been established in the 18<sup>th</sup> century following the enclosure of land. However Appleton Mill has been harnessing the waters of the river Seven to mill corn from at least 1236 right up to 1940.

In the 19<sup>th</sup> century the rise in the fortunes of village boy Joseph Shepherd had a significant effect on the appearance and facilities of Appleton. He and his wife are responsible for several 'new' buildings i.e. the Village Hall (originally a school), Christ Church, the old Parsonage (originally a school), and Appleton Hall.

In the earlier part of the 20<sup>th</sup> century older residents can recall a time when there was a pub, three shops, a post office, a school, a blacksmith, and even a fish and chip shop in the village. Not forgetting the famous Appleton brass band whose drum can be seen in the village hall along with a short written history of its local importance.

*(A comprehensive history of Appleton le Moors has recently been published by M. Allison a resident in the parish. Copies can be obtained by contacting her on 01751 417537.)*

*'Appleton le Moors is a neat little place, with some very good houses. It is surrounded by wild romantic moorland hills, and is now much frequented by summer tourists.'*

**1890 - Bulmer's History & Directory of North Yorkshire**

## **Parish Plan Steering Committee**

Jim Hall  
Janet Hayton (Chair)  
Steve Lonsdale (Secretary)  
Eddie Ward

Dave Rawlings  
Lindsey Smith (Treasurer)  
Arran Smith  
Penny Ward

### **Acknowledgements**

Special thanks to Margaret Farey of Yorkshire Rural Community Council (YRCC), who has been invaluable providing practical support and local knowledge of the process. And of course she kept the steering committee going when it seemed an endless task! Thanks are also due to Nellie Trevellyan who has provided important insights and experience as our local district councilor.

We are grateful to the following people who contributed information or support at various stages of the Parish Plan consultation.

Margaret Allison  
Jim Brooke  
Helen Beaumont  
John Creighton  
Alastair Ferguson  
Heather Fox  
Henry Iles  
Chris Ingelby  
Marjorie Ingelby  
Sylvia Price  
Ryedale Youth & Child Project  
James Welburn  
Anne Wilson  
George Winn-Darley

## History of the Parish Plan process

Back in 2002 Lindsey Smith (parish clerk) contacted Janet Hayton (secretary of Appleton Recreation Association) because she had information that grants were available for local groups. Janet attended a meeting in Kirkbymoorside which turned out to be the launch of 'Vital Villages'. This was a Government initiative to re-vitalise village life and discover what communities needed at grass roots level. Farndale and Gilamoor were among several rural parishes present at that meeting.

Janet wrote a report of the meeting and presented it to the Appleton le Moors Parish Council who subsequently agreed to support the initiative by becoming the sponsoring organisation of a Parish Plan. The production of the Plan and the consultation with residents would be carried out by volunteers who would form a Parish Plan Steering Committee.

Field worker support was offered together with a small research grant. The research would provide objective evidence to support applications for project funding and help strengthen the case for changing or adding to local services.

Margaret Farey from Yorkshire Rural Community Council became Appleton's field worker. A 'drop in' day for villagers was organised by Janet, Lindsey and Margaret in April 2003. The Ryedale Rural Transport officer and Community Link officer attended the 'drop in' along with various Appleton societies and the Church.

The event attracted about a third of households. Ideas and concerns were recorded on 'Post It' notes; later these formed the basis for the Vital Villages questionnaire. Several residents signed up to join the Parish Plan Steering Committee. The committee members had a wide range of professional skills and networks within the local community. Several other residents offered to help informally. The steering committee prepared a research grant application and budget which was sent to the Countryside Agency. The research funding was finally confirmed in November 2003.

A consultation for younger members of the community was led by Penny Ward and Eddie Ward in the form of a 'fun day' at the village hall during February 2004 half term holidays.

The steering committee compiled a draft questionnaire and circulated to various residents and interested parties for feedback. Steve Lonsdale prepared a separate database for processing and analysing the questionnaire responses. The final version of the questionnaire was distributed to each person in the Parish over the age of seven. The information was processed by YRCC, a feedback report written and the results circulated in August 2004.

A newsletter was created, coordinated and delivered to every household by Eddie Ward and Arran Smith. There was a competition to design a Vital Villages logo and a local history quiz. New web site pages were created and updated by Dave Rawlings available at [www.appletonlemoors.co.uk](http://www.appletonlemoors.co.uk)

Jim Hall acted as the group's main representative at all Parish Council meetings, providing updates and answering questions. In July 2004 a special meeting was held to

discuss and agree the **Action Plan**. In September 2004 the Parish Plan document was officially adopted by the Parish Council and approved by the Countryside Agency.

## **Consulting Young People**

As part of the consultation process the steering committee wanted to ensure that the young people in the village would also have an opportunity to "*have their say*". There were two events specifically planned for young people in the village to provide this opportunity. The first was a Fun Day held in February and the second was a separate questionnaire.

The Fun Day attracted twelve youngsters who enjoyed a full fun packed day of activities, games, competitions, creative crafts and using a map of the village had their say in what they would like in Appleton. The activities were provided by Jennie and Andy Brown from Ryedale Child and Youth Project team and members of the steering committee.

Age didn't matter as all the activities were designed so that everyone could take part - from making life-size "Egyptian" mummies using toilet rolls to playing air hockey and table top football. For the more energetic there was paint balling, boxing and exercising on the dance mat. Whilst those interested in creative crafts made clay masks, wax pictures and tile painting.

Throughout the day the youngsters were able to "*have their say*" in what they would like to develop in Appleton by adding their ideas to a collage board. The ideas varied from a skate park, trips out, to caring for the environment and activity clubs. Twelve excited and slightly exhausted young people went home with Certificates, Easter Eggs and a thank you from the steering committee. The adults happily survived to continue with the consultation process.

A special questionnaire designed to capture the ideas of the young people was circulated to 23 young people in the village aged between of 7 and 16. The response rate from the young people was excellent and achieved a 70% return.

The young people expressed interest in a wide range of activities from clubs, fun days and pantomimes to table games, board games, films, IT training and environmental issues.

The interest and enthusiasm shown by the young people throughout the consultation process clearly indicates the need for adequate provision to be made for the young people of Appleton le Moors.

## **Time for Action**

As we can see from the Action Plan, most issues can be tackled by the community itself. Many people have already volunteered. We need to capitalise on the Vital Villages feedback as soon as possible and influence government agencies and funding organisations to back local initiatives.

The Parish Plan Steering Committee will soon disband and specific **Project Groups** will be formed. The action plan shows 11 projects that can be divided into four subject areas; Environmental, Services, Cultural and Social Activities, and Traffic and Transport.

A particular project may only need a couple of people. Some projects could be combined because they involve the same type of work and the same partners e.g. pond and sheepfold restoration.

To help coordinate efforts and support the project groups an **Action Plan Steering Group** will be established. This group will pass on their expertise in grant funding, local and regional government, volunteer networks, project planning and so forth. They will also act as a conduit to the Parish Council and keep it updated.

One suggestion, made via the questionnaire, is that representatives from each of the village groups meet occasionally and pool resources. This has happened informally because some individuals are on more than one committee. A good example would be the recent successful application for a village media projector, screen and laptop. This was supported by several village groups coordinated by the Parish Plan steering committee and will be managed by the village hall committee. We hope that the Action Plan Steering Group will likewise be able to spot opportunities for mutual benefit.

This Parish Plan will be sent to all agencies that have a legal or regulatory interests e.g. Ryedale District Council, North Yorkshire County Council, North York Moors National Park Authority, Countryside Agency, National Playing Fields Association.

Non resident land-owners, existing village committees and institutions will also be sent a copy.

**We now have a Parish Plan**

**We know what we want as a community**

**We have research data to support our case**

**We know who and how to ask for help**

**We know who the decision makers are**

**Now we can get on and make things happen!**

# **Appleton Le Moors in 2004 - A summary of your feedback**

## **Demographics**

Records show that in 1673 there were 45 households in the Parish. In 2004, including the outlying farms, there are 82 households. But given family size today the current population of 174 may not be that different. The age distribution of respondents to the questionnaire shows a significant proportion of older residents possibly reflecting the popularity of this area for retirement.

Residents are employed (or self employed) in a diverse range of jobs. The tendency however is for young people to leave the area to seek careers and better paid jobs. The high cost of private housing locally is seen as a major problem to those who stay but earn local wage rates. Only 12 % of respondents are employed within a 10 mile radius of the village.

## **Retail Services**

The Appleton school closed in 1969, the shops gradually disappeared and the post office closed in 2000. However, because of private transport the travelling distances for education, health and retail services are not a priority concern for residents. It is the quality of the roads and especially road safety that are important. 60% of residents in the survey are based at home and therefore have to travel to access basic services. This may explain why mobile retail vans to the village are widely appreciated. Despite this, in August 2004 the organic shop stopped deliveries because only one customer actually placed a regular order and the Wednesday fish van stopped because of overhead costs. We need to encourage new users by providing more information to secure the economic viability for retailers in the future. It may also be possible to encourage new services like a baker's van and a fish and chip van. The group of older residents will obviously become less independently mobile and will require more services delivered to the doorstep.

There seems to be a real opportunity to manage fuel costs with residents enthusiastic about bulk buying possibilities.

## **Public Services**

Re-scheduling services such as the library and public transport could lead to better usage and certainly more value to the tax payer. Recycling looks like a real possibility based on recent announcements from Ryedale Council. There are a growing number of people who work from home or are retired so reliability of the postal service and telecommunications are also important.

We have a 2004 Action Plan but we should not forget to plan for the future. The current public transport service is barely used. Those without a car, e.g. teenagers, or those who prefer not to drive far would benefit if we can influence bus routes and schedules. Road safety at the A170 turn off needs to be addressed and since the questionnaire was distributed there have been further serious accidents. Within the village there is support for better hazard warning signs and further effort to slow traffic down as they enter and leave the village. With more children becoming old enough to go out on their own, traffic speed needs to be curbed. Six children commented that this was a concern.

## Social and Community

In 2002 a review of Ryedale villages appeared in the Gazette and Herald. It categorised Appleton as 'barely active'. In reality, and for such a small community, there are a lot of people organising events, volunteering, fundraising, running clubs and societies etc. Appleton seems to prefer the low profile approach but as we know from the questionnaire results this can mean we don't get the most out of what is on offer. When it comes to communication we need to find more effective methods e.g. newspapers, local newsletter, posters, internet etc. Relying on two small village notice boards is not enough.

The growing number of teenagers have few opportunities for activities locally and they need to be provided for. Improvements to the playing field and a youth club are high on their priority list.

## Vital Villages questionnaire feedback

This information was circulated to every household in August 2004. The questionnaires were hand-delivered to 82 addresses covering 174 people. Percentages (%) have been used *except* where recording the number of people makes more sense. The percentages are based on those who returned a completed questionnaire.

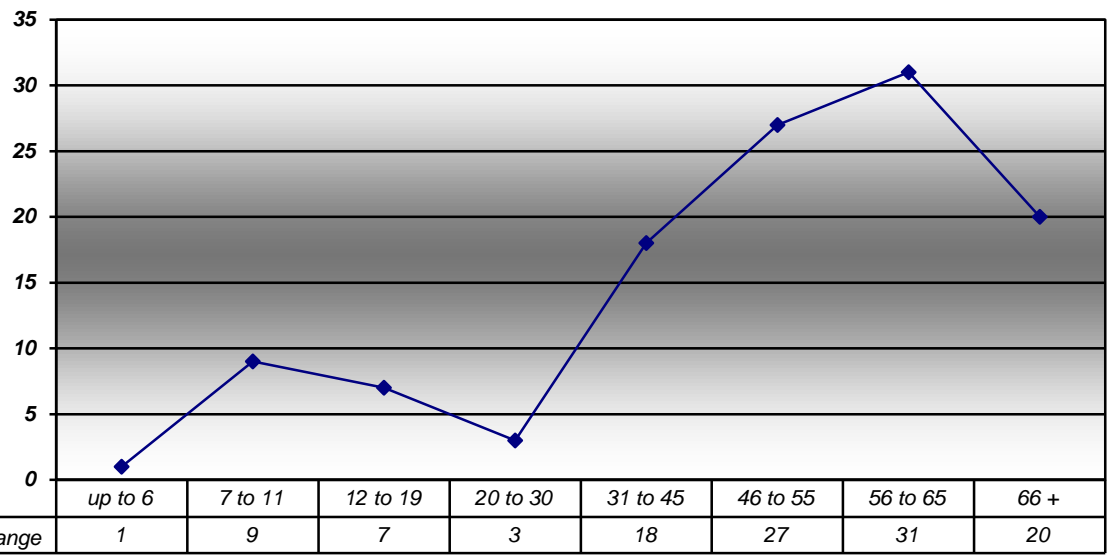
|                                    | <b>POPULATION<br/>APRIL 2004</b> | <b>% OF<br/>POPULATION</b> | <b>NUMBER OF<br/>REPLIES</b> | <b>% OF<br/>TOTAL<br/>REPLIES</b> |
|------------------------------------|----------------------------------|----------------------------|------------------------------|-----------------------------------|
| <b>Women</b>                       | <b>82</b>                        | 47%                        | <b>52</b>                    | 42%                               |
| <b>Men</b>                         | <b>69</b>                        | 40%                        | <b>47</b>                    | 38%                               |
| Adult, details<br>not provided     |                                  |                            | <b>8</b>                     | 6.5                               |
| <b>All Adults</b>                  | <b>151</b>                       | 87%                        | <b>107</b>                   | 86.5%                             |
| <b>Young<br/>people<br/>female</b> | <b>11</b>                        | 6.5                        | <b>9</b>                     | 7.5                               |
| <b>Young<br/>people<br/>male</b>   | <b>12</b>                        | 6.5                        | <b>7</b>                     | 6                                 |
| <b>All 7 to 16<br/>yrs</b>         | <b>23</b>                        | 13%                        | <b>16</b>                    | 13.5%                             |
| <b>Total<br/>population</b>        | <b>174</b>                       | 100%                       | <b>123</b>                   | 100%                              |

| <b>Employment Sector</b>                              | <b>% of working adults</b> | <b>Employment status</b>   | <b>% of all adults</b> |
|---|----------------------------|----------------------------|------------------------|
| <b>Public /government / voluntary</b>                 | 18.2                       | <b>Employed</b>            | 35 %                   |
| <b>Farming/ small holder/equestrian</b>               | 16.9                       | <b>Self employed</b>       | 23 %                   |
| <b>Construction/trades/ manufacturing/engineering</b> | 16.9                       | <b>Part time volunteer</b> | 5 %                    |
| <b>Research/consultancy/legal</b>                     | 10.4                       | <b>Retired / home mgt.</b> | 28 %                   |
| <b>Design/arts/crafts</b>                             | 10.4                       | <b>Other</b>               | 9 %                    |
| <b>Catering/ hospitality/ tourism</b>                 | 9.1                        |                            |                        |
| <b>Transport /vehicle repair</b>                      | 1.4                        |                            |                        |
| <b>Retail/wholesale</b>                               | 0.0                        |                            |                        |
| <b>Other, not stated</b>                              | 16.7                       |                            |                        |

| <b>Place of Residence</b>               | <b>% of all adults</b> |
|---|------------------------|
| Main residence <b>in</b> the Parish     | 93 %                   |
| Main residence <b>out</b> of the Parish | 6 %                    |
| No response                             | 1 %                    |

| <b>Distance to work place</b>            | <b>% all working adults</b> |
|--|-----------------------------|
| <b>Workplace within 10 miles</b>         | 12 %                        |
| <b>Workplace more than 10 miles</b>      | 21 %                        |
| <b>Based at home for work or retired</b> | 60 %                        |

|                    |
|--------------------|
| <b>Age Profile</b> |
|--------------------|



## Community Buildings and Assets

### Church and Chapel

The following chart shows what residents think are **important** about the church and Chapel.

|  | Christ Church | Chapel |
|--|---------------|--------|
| <b>Special occasions</b> e.g. weddings | 62 %          | 3%     |
| <b>Special services</b> e.g. Christmas | 59 %          | 4%     |
| <b>Historic building</b>               | 56 %          | 4%     |
| <b>Contributor to village life</b>     | 51 %          | 7%     |
| <b>Times of personal need</b>          | 43 %          | 4%     |
| <b>Regular worship</b>                 | 24 %          | 3%     |

### Village Hall

We asked what would encourage people to use the village hall more. The numbers refer to people who made similar suggestions. 15 respondents felt the hall is already well run and meets their needs. 4 people remarked that the acoustics need to be improved.

| Ideas  | Adults | Youth |
|--|--------|-------|
| <b>Promote village hall as a venue for classes, meetings and music</b> e.g. bring in more events | 14     |       |
| <b>Better information and publicity about events</b> e.g. people don't always know what's on.    | 10     |       |
| <b>New ideas</b> e.g. themed party nights, disco's, New Years Eve                                | 6      | 5     |
| <b>More of the same events</b> e.g. barbeques, rural arts, karaoke, family quizzes               | 5      | 2     |
| <b>Games nights / beetle drives</b>  | 2      |       |
| <b>Youth club*</b>   |        | 3     |
| <b>Village pantomime*/ play /show</b>  |        | 3     |
| <b>Fun days</b> e.g. Vital Villages fun day  |        | 3     |

(\*indicates a specific subject only covered in the youth questionnaire e.g. Youth Club\*)

### Village Playing Field

#### Maintenance

48% of the adult respondents would consider an increase in the Parish Precept (*part of the Community charge*) to fund maintenance on a regular basis.

#### Activities and Facilities

The youth questionnaire asked what young people currently enjoyed doing and ideas for the future. The most popular **activities** are tennis (82%) followed by swings (38%) and basket ball (26%). For the future, 51% want tree planting and a nature reserve.

The most popular **facilities** request is for a climbing frame, followed by the ability to play football and building a shelter. For the future tennis tournaments, school holiday activities, barbeques, family days orienteering, skateboarding, and camping were suggested. A pavilion/shelter was mentioned by 2 adult residents to encourage the use of the field and tennis court.

### **Village pond restoration**

77% want to see the pond restored. 12 people have volunteered so far. One person thought a pond might attract visitors and therefore litter, 4 respondents saw it as dangerous to children.

### **Village sheepfold restoration**

There are 69% in favour of restoring the sheep fold, 10 people have already volunteered to help.

### **The Reading Room**

The following activities and uses were suggested by 50 residents. 3 residents complimented the volunteers on their efforts.

| <b>Ideas</b>   | <b>Adults</b> | <b>Youth</b> |
|--|---------------|--------------|
| <b>Talks &amp; lectures</b>  | 19            |              |
| <b>Films and video shows</b>   | 17            | 6            |
| <b>Pool /snooker / billiards</b>   | 7             | 7            |
| <b>Local History</b>   | 6             |              |
| <b>Board games e.g. chess, dominoes, whist</b>   | 4             | 3            |
| <b>Use for 'small' community groups</b>  | 5             |              |
| <b>Arts based activities e.g. painting, photography</b>  | 3             |              |
| <b>Music appreciation</b>  | 2             |              |
| <b>Other ideas</b>   |               |              |
| Garden club, DIY skills, cheese & wine, story tellers, bonfire night, current affairs, wildlife club, table tennis, darts. |               |              |

## **Community and Public Services**

### **Street lighting**

A change to lighting was not necessary for 76% of respondents. 14% of residents want changes; 5% want a decrease in levels, whilst 9% an increase. The sodium lighting was disliked by 3 residents and the north end of the village is 'too dark' for 2 residents.

### **Recycling**

On average 75% want recycling facilities close to or in the village. Six people cited the facilities at Kirkbymoorside & Pickering as their reason for not needing something closer.

7 people suggested that textiles and clothes could be collected. The recycling of books and batteries were also suggested by 2 people. Silage wrap was suggested as another type of plastic that might be recyclable. The sewerage farm was mentioned as a suitable location by 1 resident.

| <b>Residents in favour of recycling</b> |     |                       |     |
|---|-----|-----------------------|-----|
| <b>Glass</b>                            | 81% | <b>Plastics</b>       | 71% |
| <b>Newspapers</b>                       | 73% | <b>Aluminum /foil</b> | 65% |

### **Refuse Collection**

Negative comments focused on bins not being returned to the right place, lack of recycling options and lack of flexibility in taking materials like cardboard.

| <b>very dissatisfied</b> | <b>dissatisfied</b> | <b>satisfied</b> | <b>very satisfied</b> | <i>No response</i> |
|--------------------------|---------------------|------------------|-----------------------|--------------------|
| 4%                       | 10%                 | 65%              | 17%                   | 4%                 |

### **Road gritting and snow clearance**

Single comments were the lack of snow clearance on pavements and that things seemed to have improved over previous years.

| <b>very dissatisfied</b> | <b>dissatisfied</b> | <b>satisfied</b> | <b>very satisfied</b> | <i>No response</i> |
|--------------------------|---------------------|------------------|-----------------------|--------------------|
| 4%                       | 10%                 | 65%              | 17%                   | 4%                 |

### **Road maintenance**

5 critical comments focused on the condition of the Lavington road.

| <b>very dissatisfied</b> | <b>dissatisfied</b> | <b>satisfied</b> | <b>very satisfied</b> | <i>No response</i> |
|--------------------------|---------------------|------------------|-----------------------|--------------------|
| <b>20%</b>               | <b>25%</b>          | 41%              | 4%                    | 10%                |

### **Drainage and ditching**

The Lavington road is mentioned 3 times as being poorly drained. There were also 2 comments about blocked drainage channels in the village.

| <b>very dissatisfied</b> | <b>dissatisfied</b> | <b>satisfied</b> | <b>very satisfied</b> | <i>No response</i> |
|--------------------------|---------------------|------------------|-----------------------|--------------------|
| <b>20%</b>               | <b>26%</b>          | 41%              | 4%                    | 9%                 |

### **Police Service**

Only 4 (out of 107) adults know who the local beat officer is for the village. Below is a summary of the kinds of initiatives that have community support.

| <b>Crime prevention measures</b>  | <b>Supporting</b> |
|-----------------------------------|-------------------|
| <b>Neighbourhood Watch Scheme</b> | 61%               |
| <b>Greater police presence</b>    | 40%               |
| <b>Advice leaflets</b>            | 28%               |
| <b>Public advice session</b>      | 20%               |

### Mobile library

Presently 20 adults said they use the service and a further 22 adults and 8 young people may use it if they had more information.

### Retail services

The questionnaire asked which existing services would be used more if there was information available and what additional services would be welcomed.

1 resident commented that delivery services are not useful if people are out all day. 2 adults would like to see an ice-cream van visit.

| Existing Service             | % using currently | Potential new customers |       | Total no. potential customers |
|------------------------------|-------------------|-------------------------|-------|-------------------------------|
|                              |                   | Adult                   | Youth |                               |
| Fruit and Vegetables         | 57%               | 18                      | 6     | <b>24</b>                     |
| Butcher                      | 15%               | 22                      |       | <b>22</b>                     |
| Organic                      | 7%                | 21                      |       | <b>21</b>                     |
| Fish                         | 42%               | 18                      |       | <b>18</b>                     |
| Milk                         | 35%               | 7                       |       | <b>7</b>                      |
| <b>Suggested new service</b> |                   |                         |       |                               |
| Fish & Chips                 |                   | 42                      | 13    | <b>55</b>                     |
| Baker                        |                   | 39                      | 10    | <b>49</b>                     |
| Video & DVD                  |                   | 34                      | 15    | <b>49</b>                     |
| IT Training                  |                   | 32                      | 4     | <b>36</b>                     |
| Hairdressing                 |                   | 4                       |       | <b>4</b>                      |

### Bulk discounts for fuel

71 adults would be willing to switch oil supplier and 57 would change their coal/logs supplier if bulk discounts could be organised. (The number of households may be fewer.)

### Gas supply

Assuming a connection charge, 51 people would like to see a gas supply brought to the village. (The number of households may be fewer.)

### Broadband

43 people are interested in being connected to broadband of which 23 have already registered an interest.

### Tourism

71% of adults and 81% of young people said no to an increase in tourism. Few people would derive any economic benefit from an increase in tourism. (See analysis of occupations.) When asked if an increase in tourism to the village was desirable 16% said yes. Those that answered yes had ideas that fell into two broad groups.

- Information points related to local walks and history
- Availability of food/refreshment during the day.

## Road Traffic

### In the village

31% want measures to slow down traffic. Responses indicated problems are most often experienced by those living at the edges of the village. 37% wanted better signs and hazards warnings. In the youth questionnaire we asked what would make roads safer on the village and 25% of respondents wanted the traffic to slow down.

| <b>Ideas</b>  | <b>No. Suggesting</b> |
|---|-----------------------|
| <b>Speed bumps e.g. north end &amp; at the bend</b> | 12                    |
| <b>30 mile signs moved further out of village</b>   | 5                     |
| <b>Enforce rules e.g. police</b>                    | 4                     |
| <b>Improved signs generally</b>                     | 4                     |
| <b>Sheep hazard signs</b>                           | 2                     |
| <b>Improved signs at the bend</b>                   | 2                     |
| <b>Less cars parked in street</b>                   | 2                     |
| <b>Lane lines</b>                                   | 2                     |
| <b>No parking on the bend</b>                       | 1                     |
| <b>Toad warning signs</b>                           | 1                     |

### On the A170

When asked about new measures to make the main road turn off safer 72% are in favour of changes and 35% wanted to see traffic slowed down.

| <b>Summary of ideas for A170 turn off</b>    | <b>No. suggesting</b> |
|--|-----------------------|
| <b>Reflectors /white curb at junction</b>    | 8                     |
| <b>Cleaner/ more appropriate signs</b>       | 4                     |
| <b>Slip road/chevrons/ deceleration lane</b> | 5                     |
| <b>Widen the turning</b>                     | 1                     |
| <b>No overtaking at turning</b>              | 1                     |

## Community Environment

The state of the back lanes are highlighted by 4 people e.g. fallen branches, level of mud, dog fouling and general deterioration. Comments made by 1 or more persons included burglar alarms, speeding traffic, bull in field, street light pollution, abandoned vehicles and rubbish. 1 respondent highlighted the cost of disposing of fallen stock.

| <b>Issue</b>                                    | <b>% experiencing persistent or occasional problems</b> |
|---|---|
| <b>Gates left open by walkers &amp; riders</b>  | 30 %  |
| <b>Blocked/overgrown/ploughed Rights of Way</b> | 23 %  |
| <b>Spraying of crops and paths</b>              | 17 %  |

|                               |      |
|-------------------------------|------|
| <b>Noise /smell pollution</b> | 14 % |
| <b>Fallen stock</b>           | 12 % |

### **Dog Fouling**

34% see this as a problem, 3 residents said the situation had improved.

| <b>Ideas</b>   | <b>No. people suggesting</b> |
|--|------------------------------|
| <b>Educate owners on responsibilities and health risks</b> | 8                            |
| <b>Promote 'poop &amp; scoop'/install bins</b>             | 8                            |
| <b>Report those responsible</b>                            | 2                            |

### **Bulb planting**

44 people are for, and 52 against bulb planting. 9 people thought sheep would eat the plants and 2 people thought this might result in verges being made 'off limits' to sheep.

### **Spaunton Quarry**

62% of respondents want to be kept informed of future planning issues. This is a summary of the most often mentioned concerns and ideas.

| <b>Comments</b>                                | <b>No. of people</b> |
|--|----------------------|
| <b>Continue as a quarry</b>                    | 7                    |
| <b>Leave as a wild life sanctuary</b>          | 7                    |
| <b>Information &amp; consultation required</b> | 6                    |
| <b>Opposed to landfill</b>                     | 5                    |
| <b>Change to recreational use</b>              | 5                    |
| <b>Opposed to an extension</b>                 | 4                    |
| <b>Problems with dust &amp; pollution</b>      | 3                    |

### **National Park Planning Authority**

17% are not generally supportive of the planning regulations. The new retrospective planning enforcements were a concern to 2 residents and one resident highlighted the lack of grants.

| <b>Comments</b>                                 | <b>No. of people</b> |
|---|----------------------|
| <b>Decisions seem inconsistent or confusing</b> | 9                    |
| <b>Regulations too strictly applied</b>         | 4                    |
| <b>Plastic doors and windows a problem</b>      | 3                    |

### **Privately installed street lighting**

Most respondents were either not bothered or comfortable with present arrangements. 13% feel there should be a decrease, particularly in 'security lighting' which was described by one person as 'over enthusiastic'. 6% feel there should be an increase.

## Community Activities

### Village Archive

17 residents and 5 non residents have volunteered to make material available to build an archive. The 'Clubs and Interests' forms recorded 10 people who want to be involved and 16 people who want to belong to a local history club.

The following suggestions (summarised) were made regarding the creation of a village archive;

- create a CD archive that could be loaned out or bought.
- images could be copied or reproduced etc. to raise funds
- recordings of spoken accounts of life in Appleton Le Moors.
- ensure accessibility and security of the material

### Pantomime

This topic, which appeared in the youth questionnaire, had a positive response from 16 respondents; that's 100%! 10 want to watch a pantomime, 6 want to help produce and 11 want to be in the cast.

### Youth Club

14 young people were interested in a youth club and 4 people would be willing to travel to another village to join one.

| Interests  | No. of suggestions |
|--|--------------------|
| <b>Sport &amp; games</b> e.g. badminton, table tennis & football, snooker/pool, darts, paint balling | 16                 |
| <b>Art, music, drama</b>   | 4                  |
| <b>Board games</b>   | 3                  |

### Village notices

20 adult respondents want to be able to advertise items for sale, services and so forth. There were several suggestions which included using the village hall, local newsletter, church magazine, trades directory, village website, larger or new notice boards.

## Transport

### Car use

The majority of residents travel by car, 63% of adults have sole use of a car and 29% share a car. There were 3 comments that car parking in the street and on verges should be discouraged but no reasons given.

### Village bus service

4 out of 7 young people in the 12 to 16 age group currently travel independently on public transport. When asked if the village bus would be useful as a regular means of transport if times and destinations were changed 9 adults said yes and a further 4 young

people were interested in using the service at weekends to York, Pickering, Malton and Kirkbymoorside. 79% of adults would not consider the local bus at all.

### **Main road bus service**

Currently 3 people use the A170 bus regularly, stopping at a variety of places. The number of people who would consider using main road buses is relatively small, 14 people, but this may be significant in terms of rural transport initiatives. 88% of adults would not consider using the main road service even if changes were made.

A bus timetable in the village was important to all 14 potential users as well as a local taxi to and from the stop. An express service was important to 8 respondents. 3 young people would use the main road service if there was a secure bike shed, proper shelters and more frequent buses.

### **Moors Bus**

70% of adults favoured the Moors Bus stopping in the village. From the youth questionnaire 3 of the 5 respondents, who travel alone by public transport, indicated they would use it.

## **Additional comments**

The following are 'one-off' comments unless there is a number in brackets. This shows how many people made the same or similar suggestion.

### ***Public Facilities***

Waste bins top & bottom of village (2)  
Affordable housing for young people (2)  
Two post collections daily  
Rubbish bin near the plantation seat  
Small shelter for school bus and walkers  
Post box not suitable for A4 envelopes  
Widen Hamley Lane

### ***Environmental***

Village to stay as it is today (6)  
Avoid urbanisation / modernisation (2)  
Sheep droppings

### ***Community Initiatives***

Christmas lights  
Village van share  
Plant trees on verges e.g. rowan  
Volunteer car service for elderly  
Various Committees to pool resources  
Youth club for the area

Plant swap  
Village 'tug of war'

## Action Plan for Appletton le Moors 2004

**Priority level** takes into account the level of support, consequences of no action, and realistic timeframes. **Low** = next 2 years, **Medium** = next 12 months, **High** = next 6 months.

**Key to abbreviations :** **NYMNPA** - North York Moors National Park Authority, **RDC** - Ryedale District Council, **YRCC** - Yorkshire Rural Community Council, **NYCC** - North Yorkshire County Council, **ALMRA** - Appletton Le Moors Recreation Association, **NPFA** - National Playing Fields Association

### Social Activities

| Topic                 | Response from residents        | Initial Action points | Lead responsibility        | Partners  | Priority |
|-----------------------|--------------------------------|-----------------------|----------------------------|---|----------|
| <b>Youth Club</b>     | 14 (88%) of under 16's support | Form volunteer group  | Youth Club project group   | Ryedale Youth & Child. NYCC (community & educ.) | medium   |
| <b>Pantomime/show</b> | 100% of under 16yrs            | Form volunteer group  | Village show project group | Village hall, RDC arts officer                  | medium   |

### Retail Services

| Topic                            | Response from residents | Initial Action points  | Lead responsibility                         | Partners                        | Priority |
|----------------------------------|-------------------------|--|---|---------------------------------|----------|
| <b>Existing retail services</b>  | up to 57% use           | Form volunteer group to coordinate and distribute information        | Retail project group                        | Retail traders                  | medium   |
| <b>Potential Retail services</b> | up to 42 % interested   | Form volunteer group to investigate new providers                    | Retail project group                        | Retail traders                  | medium   |
| <b>Broadband</b>                 | 43 people               | Parish plan SC feedback to local Broadband coordinator in Lastingham | Existing local campaign. (Lastingham based) | B.T., RDC Economic Dev. Officer | high     |
| <b>Fuel bulk buy discounts</b>   | 57 / 71 people          | Form volunteer group to investigate new providers                    | Retail project group                        | Retail traders                  | medium   |
| <b>Gas supply</b>                | 51 people               | Form volunteer group to investigate new providers                    | Retail project group                        | Supply companies, NYCC          | medium   |

| <b>Special interest groups</b>         |  |   |  |  |                 |
|--|--|---|--|--|-----------------|
| <b>Topic</b>                           | <b>Response from residents</b>                 | <b>Initial Action points</b>  | <b>Lead responsibility &amp; partners</b>                        | <b>Associates</b>                                      | <b>Priority</b> |
| <b>Village Archive</b>                 | 17 volunteers                                  | Form volunteer group  | Village archive project group                                    | RDC Arts Officer, Ryedale Museums                      | medium          |
| <b>Village Pond restoration</b>        | 77% want it restored. 12 volunteers.           | Form volunteer group  | Village pond project group, Landowner, NYMNP A (ecology officer) | NYMNP A, RDC (Tree officer) Court Leet, Parish Council | high            |
| <b>Bulb planting</b>                   | 44 residents in favour                         | Form volunteer group  | Verges project group, Landowners, NYMNP A (biodiversity officer) | Landowners, Court Leet, Parish Council                 | low             |
| <b>Village notices/ Communications</b> | 20 residents want to advertise goods/ services | Form volunteer group to look at communications options. Events communications also needed   | Communications project group                                     | Parish Council (notice board only), RDC                | low             |
| <b>Village sheepfold restoration</b>   | 69% in favour. 10 volunteers                   | Form volunteer group  | Sheepfold project group, Land-owners, NYMNP A                    | Land-owners, Court Leet, RDC                           | medium          |
| <b>IT training</b>                     | 36 want training                               | Seek volunteer coordinator  | volunteer coordinator  | RDC, NYCC (Rural Arts)                                 | high            |
| <b>Parish Council</b>                  |  |   |  |  |                 |
| <b>Topic</b>                           | <b>Response from residents</b>                 | <b>Initial Action points</b>  | <b>Lead responsibility &amp; partners</b>                        | <b>Associates</b>                                      | <b>Priority</b> |
| <b>Street lighting</b>                 | 14% want either increase or decrease           | Feedback through the Parish Plan report to Parish Council for discussion and decide action. | Parish Council   |  | low             |
| <b>Dog fouling</b>                     | 34% say it's a problem                         | Feedback through the Vital Villages report to local dog owners.                             | Parish Council   | Dog Warden RDC   | medium          |
| <b>Playing Field Maintenance</b>       | 48% would pay increase in community charge     | ALMRA submit costings to Parish Council. PC reviews.  | Parish Council, ALMRA  | NPFA, YRCC, Local Councils Assoc.                      | high            |

| <b>North York Moors National Park Authority</b> |   |   |   |                                 |                 |
|---|---|---|---|---------------------------------|-----------------|
| <b>Topic</b>                                    | <b>Response from residents</b>                                | <b>Initial Action points</b>  | <b>Lead responsibility</b>                    | <b>Associates</b>               | <b>Priority</b> |
| <b>Tourism</b>                                  | 16% in favour of increase / 71% not in favour                 | Feedback to the NYMNP through the Parish Plan report.                       | NYMNP, RDC                                    | Parish Council                  | low             |
| <b>Planning regulations</b>                     | 17% not supportive  | Feedback to the NYMNP through the Parish Plan report.                       | NYMNP, RDC                                    | Parish Council                  | medium          |
| <b>Environmental concerns</b>                   | 12 -23% experience problems                                   | Feedback to NYMNP through the Parish Plan report.                           | NYMNP, RDC                                    | Parish Council                  | medium          |
| <b>Moors bus</b>                                | 70% in favour of Appleton stop                                | Feedback to NYMNP through the Parish Plan report.                           | NYMNP   |                                 | high            |
| <b>Public Transport</b>                         |   |   |   |                                 |                 |
| <b>Topic</b>                                    | <b>Response from residents</b>                                | <b>Initial Action points</b>  | <b>Lead Responsibility &amp; action group</b> | <b>Associated</b>               | <b>Priority</b> |
| <b>Local village service</b>                    | 13 residents would use if rescheduled                         | Form volunteer group. Work with Rural Transport officer to revise schedules | Transport project group, RDC, NYCC            | NYMNP, Ryedale Voluntary Action | medium          |
| <b>Main road service</b>                        | 17 residents would use if services and or facilities improved | Form volunteer group. Work with Rural Transport officer to revise schedules | Transport project group, RDC, NYCC            | NYMNP, Ryedale Voluntary Action | medium          |

| <b>Ryedale District Council</b>           |  |  |  |                             |                 |
|---|--|--|--|-----------------------------|-----------------|
| <b>Topic</b>                              | <b>Response from residents</b>         | <b>Initial Action points</b>   | <b>Lead Responsible &amp; Action group</b> | <b>Associates</b>           | <b>Priority</b> |
| <b>Refuse collection</b>                  | 14% not satisfied                      | Feedback through the Parish Plan report to RDC                         | RDC  | Parish Council              | low             |
| <b>Recycling facilities</b>               | 75% want local facility                | Feedback through the Parish Plan report to RDC                         | RDC  | Parish Council              | high            |
| <b>Road gritting &amp; snow clearance</b> | 14% not satisfied                      | Feedback through the Parish Plan report RDC                            | RDC  | Parish Council              | low             |
| <b>Road maintenance</b>                   | 45% not satisfied                      | Feedback through the Parish Plan report                                | RDC  | Parish Council              | medium          |
| <b>Drainage</b>                           | 46% not satisfied                      | Feedback through the Parish Plan report                                | RDC  | Parish Council              | medium          |
| <b>Police service</b>                     | 20 - 40% Support for advice and visits | Feedback through the Parish Plan report to local community policeman   | NYCC Police Authority                      | Parish Council              | medium          |
| <b>Neighbourhood Watch</b>                | 61 % want re-launch                    | NYCC Police Authority to be notified                                   | Neighbourhood Watch coordinator            |                             | high            |
| <b>Mobile Library</b>                     | 24 potential new users                 | Feedback through Parish Plan report                                    | NYCC, RDC                                  |                             | medium          |
| <b>Traffic management A170</b>            | 72% want changes                       | Form volunteer group. Feedback RDC and NYCC through Parish Plan report | Traffic project group, RDC, NYCC           | Parish Council              | high            |
| <b>Traffic management within village</b>  | 31-37% want improvements               | Form volunteer group. Feedback through Parish Plan report              | Traffic project group, RDC, NYCC           | Action Group Parish Council | medium          |