

Further information.

If you are in any doubt about what will be required for your planning application contact the Ryedale Planning Department **before** you submit a planning application. They will be able to provide you with more detailed guidance. Other useful leaflets and sources of information are:

- The Ryedale Biodiversity Action Plan – see Ryedale District Council Web site www.ryedale.gov.uk/pdf/ryedale_BAP.pdf
- Ryedale Countryside Officer, Ryedale District Council, Ryedale House, Malton, YO17 7HH. Tel: 01653 600666 extension 333; e-mail sue.bragg@ryedale.gov.uk
- Natural England York Office. Tel: 01904 435500 <http://www.naturalengland.org.uk/publications/default.htm>
- www.natureonthemap.org.uk
- North and East Yorkshire Ecological Data Centre – NEYEDC – 01904 641631 www.neyedc.co.uk
- Yorkshire Wildlife Trust – 01904 659570
- Yorkshire Bat Group www.nyorkbats.freeserve.co.uk
- Bat Conservation Trust www.bats.org.uk
- RSPB – www.rspb.org.uk
- Action for Swifts – www.actionforswifts.com
- Barn Owl Trust – www.barnowltrust.org.uk
- Multi Agency Geographical Information System for the Countryside – Magic Website – www.magic.gov.uk/website/magic
- Ryedale District Council Website – Biodiversity Action Plan www.ryedale.gov.uk/pdf/ryedale_BAP.pdf
- National Biodiversity Network www.searchnbn.net/index_homepage/index.jsp
- North Yorkshire Regionally Important Geological Sites.



PLEASE NOTE THAT FOR CERTAIN WILDLIFE SPECIES AND HABITATS, SURVEYS CAN ONLY BE CARRIED OUT AT PARTICULAR TIMES OF THE YEAR. TO MINIMISE ANY DELAYS TO YOUR APPLICATION PLEASE THINK ABOUT WILDLIFE AT THE VERY START OF YOUR APPLICATION PROCESS.

CONTACT INFORMATION

**Development Control Dept
Ryedale District Council
Ryedale House
Malton
YO17 7HH
Tel: 01653 600666
Web site: www.ryedale.gov.**

PROTECTED WILDLIFE AND YOUR PLANNING APPLICATION – A HOUSEHOLDERS GUIDE



Some wildlife is protected by law.

- The Local Planning Authority has a legal obligation to take account of protected species when determining a planning application. Ryedale District Council also has a duty to conserve and enhance the wildlife resource around us.
- Before submitting an application it is important to consider the possibility of protected species being either on your land or on land nearby.
- Where protected species are known/likely to be present; a survey of the application site will need to be submitted with the application.
- Without an acceptable survey report, the application will not be determined.
- If the survey confirms the presence of protected species, mitigation proposals will also need to be included with the application. There may also be a requirement for applicants to obtain an appropriate licence for the work.
- The Local Planning Authority also has a duty to safeguard designated wildlife sites and important habitats. These are not covered in this leaflet but further information can be obtained from Ryedale District Council.

To find out more please read on



This leaflet contains information on the main protected animals found in Ryedale to help you decide if you need to consider protected species when thinking about your

Bats

Bats are very commonly found in houses and old barns in Ryedale, as well as in tree cavities, underground structures, bridges, churches and schools. You may not know you are sharing your home with them as they are seasonal visitors but will re-use the same roost year after year. They can be in the roof space, under the tiles, barge and soffit boards, in cavity walls, or in the roof apex. They can enter tiny crevices. If your development involves any changes to your roof, you may need to consider bats.



Great crested newts

Ryedale is a strong hold for this internationally threatened species which in a way is our equivalent of the Giant Panda. Great crested newts spend their lives occupying suitable habitats within approx 500m of their breeding pond, with some venturing further in search of new ponds. Suitable terrestrial habitat includes areas of rough grassland, hedgerows, ditches and woodland. Development proposals within the vicinity of ponds need to consider the possible presence of great crested newts.



Wild Birds

All birds with a few exceptions are protected by law. Of particular concern with regard to development in Ryedale are swifts, house martins, swallows and barn owls, all of which may be nesting in or on your building.

You will also need to think about any ground works or cutting of trees/shrubs and ensure that you do this work outside of the bird nesting season ie not between March and August.

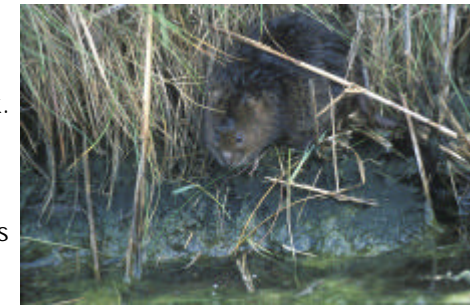


Otters

Otters are now starting to make a comeback in Ryedale, as well as across the country, following years of decline. They live and breed in and near open water and watercourses. If you are proposing to carry out development within 20m of a watercourse, you may need to consider otter.

Water vole

Once common and widespread, water voles have suffered a severe decline in the last 30 years due to habitat loss and predation by mink. They are known to occur in several Ryedale villages and tend to live near open water, a stream or pond but nest and burrow on ditch banks and stream sides. If your development is close to a river, stream, beck, ditch or pond, you may need to take account of water voles.



Badgers

Both badgers and their setts are protected by law. They can be found in a variety of habitats and will excavate holes (setts) along hedgerows, within scrub, on farmland and occasionally under outbuildings in peoples gardens. Badgers routinely use the same paths between their sett and hunting ground.



White-clawed crayfish

This is our only native crayfish and can be found in some streams, rivers and lakes. In Ryedale, it's strong hold is the middle section of the River Rye but it has also been recorded from other streams in the Rye system including the Holbeck, Gilling Beck and Marrs Beck. It may still be in other streams around the District.

