

# EBBERSTON WITH YEDINGHAM PARISH PLAN



2011 - 2016



## **PREFACE**

### **Message from the Chair of Ebberston with Yedingham Parish Council.**

May I take this opportunity to thank the group of parishioners whose hard work has produced this document. I would also, of course, like to thank you, the residents of the Parish, for completing the two questionnaires in such high numbers.

The Parish Council will endeavour to carry out your wishes wherever it is possible to do so. Some things we may be able to do reasonably quickly; some may take longer to achieve; and some may not be possible.

We will have to work with other authorities and/or neighbouring Parishes to move some items forward; and for others we will need **YOUR** help.

*Mrs Lynda Mennell*

## **INTRODUCTION**

The purpose of a Parish Plan is to enable parishioners to comment on and influence how their respective communities are evolving. The Plan should provide residents with an opportunity to identify issues which they would like to see addressed.

A Parish Plan cannot resolve all issues, and many actions have to be undertaken in association with other organizations e.g. North Yorkshire County Council, Ryedale District Council, Forest Enterprise etc. However, a completed and up to date Parish Plan emphasizes to the partner organisations the strength of feeling and coordinated views of parishioners.

The first plan for Ebberston with Yedingham Parish was prepared in 2004 and resulted in an Action Plan of issues to be addressed in terms of whether they were of Low, Medium or High priority as deemed by the parishioners. Many of the actions identified in 2004 have subsequently been implemented-

- The Neighbourhood Watch Scheme has been revitalized very successfully
- Ebberston Village Hall has been improved
- Ebberston Village Hall Car Park has been resurfaced
- All Parish Village Notice Boards have been replaced
- An ever widening range of activities and talks have taken place in the Village Hall
- The state of the roads around Bickley has been partly addressed

However, since 2004 there have been a number of changes, in particular many new residents moving into the Parish. Consequently there has been a need to review the Parish Plan and identify an Action Plan for the next few years to 2016.

The Parish Plan has been prepared in two distinct stages each of which has focused on consultations with the parishioners in the form of Questionnaires.

There was a good response from Ebberston and Bickley residents: however, it proved impossible to obtain sufficient response from Yedingham upon which to focus an Action Plan. Consequently it is suggested that Yedingham produce a supplement to the Parish Plan as a matter of urgency.

The First Questionnaire sought to identify specific information about respondees, but also sought to discover how parishioners saw their respective communities, what they loved/hated and suggestions for improvements. The results are as follows:-

# EBBERSTON VILLAGE 2011-2016

Over 70% of the households in Eberston returned the Parish Plan Questionnaire



## Households

50% male & 50% female!  
14% are under 18  
& 30% are over 65



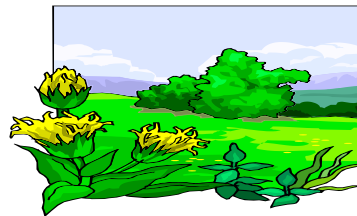
## Helping others

Over half households are willing to help at least once a month.



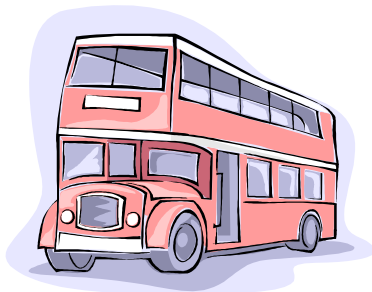
## Cars

Each household has on avg 1.5 vehicles and 20% of all vehicles are parked on the road



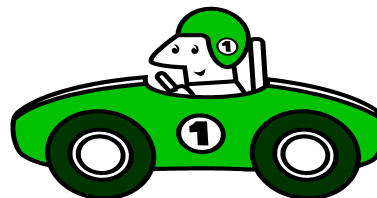
## Love

Countryside, peace, quiet, good neighbours, community spirit.



## Bus

3.5% of households use the bus most days but 29% of households never use the bus service



## Hate

Speeding traffic, dog fouling, bad parking, planning decisions.



## Facilities

35% of households use The Village Hall regularly, 10% use no village facilities at all



## Improve

Your suggestions form the basis of the second questionnaire.

The Second Questionnaire was based on the outcomes of the first and sought to identify the level of importance which individual residents gave to issues raised by rating them on a scale of 1-10. The resultant information was then prioritised in terms of high and low, based on whether the overall response was greater or less than 5 out of 10. In addition, respondees were asked for further information e.g. the willingness to participate in dealing with an issue or whether they would agree to a small increase in the Parish Precept to fund improvements. The results are as follows:-

## EBBERSTON VILLAGE 2011-2016

120 households returned the 2<sup>nd</sup> Parish Plan Questionnaire, in which they rated the importance of issues as marks out of 10



### BETTER STREET LIGHTING

Ave Score **3.6 out of 10**

(10 households scored 8-10)

Precept : Yes : 20  
No : 86

LOW PRIORITY

Overall street lighting was found to be adequate by most people, with many comments on there being too much light pollution. Several points in the village were suggested as possible sites for extra street lights but no one place was cited more than once.



### TRAFFIC SPEED CONTROL

Ave score **7.0 out of 10**

(64 households scored 8-10)

Precept for warning display :  
Yes : 46  
No : 66

HIGH PRIORITY

Concern was shown for the speed of traffic on all roads in the village. Many other calming measures were mentioned, including 20mph on Back Lane, speed humps near the playground, police speed traps etc. Frustration at delay in extending 30mph on Back Lane to beyond playing field.

### MAINTENANCE OF ROADS/ WINTER CLEARANCE

Ave score **7.7 out of 10**

(63 households scored 8-10)

Precept for Grit Bins : Yes : 60  
No : 53

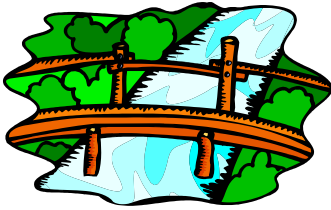
HIGH PRIORITY



Whilst some thought roads were kept in good condition in bad weather, there was strong support for improvements e.g. Grit Bins filled for use in specific problem areas. Whilst many thought it should come from the Highway Authority, a majority agreed to an increase in precept if necessary.

---

## BETTER DRAINAGE



Ave score **5.6 out of 10**

(37 Households scored 8-10)

Volunteer to clear beck Yes : 43

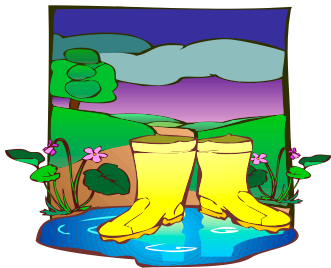
Organize clearance Yes : 8

**HIGH PRIORITY**

Most people who live by the beck try to keep it clear and many other people said they would help in working parties, with professional advice. Others apologised as they were now too old to physically help! Putting grills on the bridges was suggested.

---

## FOOTPATHS



Ave Score **5.8 out of 10**

(44 households scored 8-10)

Help 32

**HIGH PRIORITY**

Many very enthusiastic about a path around the bottom of the village to avoid the road from the junction of Main St and B 1258 to Back Lane. Also the fact that Ebberston has no footpath/cycle way to Allerston or Snainton (our nearest amenities) other than going through fields.

---

## DOG BINS



Ave Score **4.0 out of 10**

(19 scored 8-10)

Precept for bins Yes : 17  
No : 91

**LOW PRIORITY**

Most people did not want more dog bins but to encourage people to use the ones already provided, possibly by improved signage, especially to help visitors. Some gaps e.g. In Mill Lane, were identified but no specific locations.

---

## IMPROVE PLAY AREA/SPORTSFIELD



Ave score **4.2 out of 10**

(17 households scored 8-10)

Help –only a handful

**LOW PRIORITY**

Many praised the sportsfield provision but were either unable or unwilling to help with the upkeep. A few suggestions such as tennis bookings and subscriptions were put forward.



### VILLAGE TIDY

Ave Score **6.7 out of 10**

(58 households scored 8-10)

Help 42

Organize 5

**HIGH PRIORITY**

Most thought Eberston was very clean and tidy already except for a few problem areas such as rubbish on the main road verges. A number of people said that they already picked up litter, and others were prepared to help.

### EBBERSTON DIRECTORY



Welcome 68

Help create 27

Help update 25

Make Entries 14

An Eberston Directory would generally be welcomed but equally information was thought to be published elsewhere such as newsletter, notice boards etc. An up to date website would be appreciated by some.

### NEWSLETTER- BIGGER & BETTER?

Ave score **4.5 out of 10**

Write articles 24

Compile and distribute 25

Increase in **precept** to  
enhance

Yes : 29

No : 80

**LOW PRIORITY**



Eberston Newsletter is thought to be very important to keep villagers up to date and many thought excellent as it is but suggestions for change included more editions per year, articles by villagers and utilizing advertisements from local business to offset costs.

### COMMUNITY EVENTS

Ave score **4.8 out of 10**

(16 households scored 8-10)

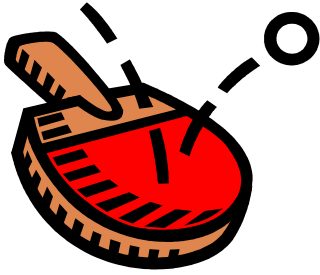


**LOW PRIORITY**

Many thought community events very important and as a small village there is a lot going on already but very few willing to lead other events. Cost was sometimes prohibitive and free events would be appreciated.

---

## RECREATIONAL CLASSES



Ave Score **4.3 out of 10**  
(12 households scored 8-10)

1 offer to lead a class

Various classes from keep-fit to cookery, especially for the older generation, or aimed at men. were suggested. Only 1 offer to lead a class. Lack of space in Village Hall also mentioned.

LOW PRIORITY

---

## LIBRARY in Village Hall



Use Library service 64  
Mobile 7  
Pickering 26  
Scarborough 12  
Malton 4  
Ayton 3  
Scalby 2

Importance of library in VH  
Ave score **2.4 out of 10**

Library in Village Hall was not felt to be feasible but suggestions such as a second hand bookstall and a reading group/book club were suggested.

LOW PRIORITY

---

## SHOP



Ave score **5.9 out of 10**  
(44 households scored 8-10)

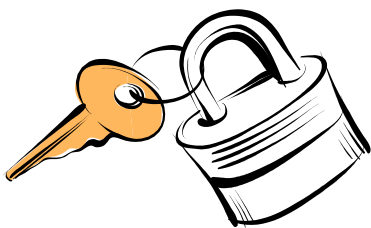
Help organize and run 20  
Delivery helpful 21

Lots thought a shop would be great but perhaps not feasible however there was enough interest to investigate further.

HIGH PRIORITY

---

## NEIGHBOURHOOD WATCH



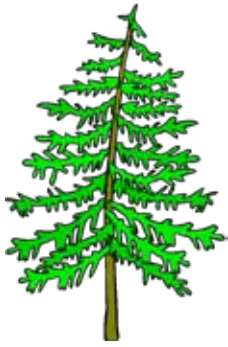
Ave score **6.4 out of 10**  
(49 households scored 8-10)

62 offers of Help

Ebberstonians look out for their neighbours and most appreciate NHW although some are unaware of the scheme.

HIGH PRIORITY

---



## DALBY FOREST

Visits -	
Regularly	27
Occasionally	71
Never	17
Ticket Annual	29
Day	18
Like to visit more often	55

Overwhelming reason for not going into forest is the cost of car toll, as not everyone can walk/bike there.  
Many thought there should be a discount for parishioners.

## PLANNING CONTROLS/ CHANGE

Ave score **7.4 out of 10**

(66 households scored 8-10)

Conservation area Yes : 62  
No : 59

Parish manage own evolution  
Yes : 77  
No : 20  
Don't Know : 6

The Village is divided as to question of Conservation status. Planning very important and more information has to be made available, but generally most people are keen for Parish to have a greater say over how the village evolves.

**HIGH PRIORITY**

As Eberston and Bickley often have very different issues, the results have been subdivided and are presented separately.

## Bickley & Crosscliffe 2011 - 2016

**Bickley** is situated at the northern edge of Ebberston Parish within the North York Moors National Park, and consists of twenty one dwellings including several farms and small-holdings. It is approximately six miles from Ebberston and nine miles from Scarborough, and due to the topography of Bickley and Crosscliffe we tend to look towards the Scarborough area for our services.

Bickley has remained relatively unchanged for almost one hundred years and the present residents indicate that they would like it to stay as it is. They don't have or expect to have the same services as towns and villages when in such a remote rural location with a very dispersed community, but they have and enjoy peace and quiet and wonderful countryside which is greatly appreciated.

A total of eighteen questionnaires were distributed to the households in Bickley and Crosscliffe of which sixteen were completed and returned.

The figures and comments below are based on these returned questionnaires

### Local Roads & Traffic



The residents are mainly satisfied with the condition of local roads maintained by the NYCC Highways but there were some concerns regarding potholes and lack of passing places. However the un-metalled road from South Moor corner to Givendale Head farm is considered unsatisfactory by 12 households with 3 stating they don't use it. This is a vital route to connect Bickley and Crosscliffe to the A170

and used by many when the Forest Drive is closed, there are alternative ones via Troutsdale or Forge Valley but incur much greater travel time and mileage.

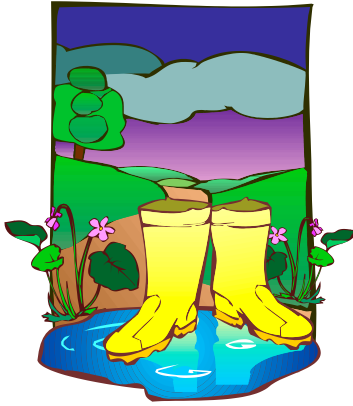
A number of residents would like to see improved access through Dalby Forest Drive before 7am and after 8pm in the evening, however all residents are allowed free access during the day and receive a free pass.

Although the incidences of illegal off-roading have reduced over recent years it is still considered to cause difficulty for 5 households with motor bikes being the greatest problem, particularly in Langdale Forest and around Darncombe with reports of footpaths and stream beds being damaged.

Speeding traffic is an issue for 10 households, particularly by visitors who are not familiar with the blind corners and sharp bends. The vehicles now using the local roads are often large 4x4's.

**HIGH PRIORITY**

## Footpaths



Most residents are satisfied with the condition of local footpaths, there is some concern regarding crops growing over paths and damage from motor bikes.

**HIGH PRIORITY**

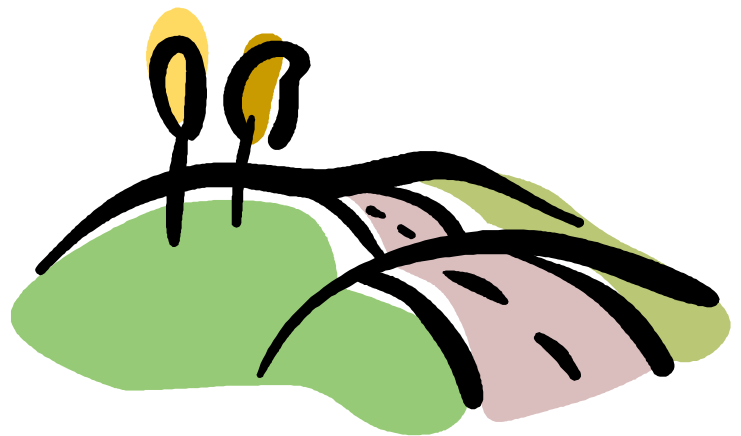
## Environment

### Litter

There are an equal number of households who consider litter to be a problem and those who do not, with the main concerns being drinks cartons and food wrappers thrown from moving vehicles

*“litter is becoming an issue particularly on new cycle trails”*

**LOW PRIORITY**



### Road Verges

Over half the respondents feel that the maintenance of the local road verges is satisfactory, but a number would like to see verges cut more often to improve visibility particularly on corners. There are a couple of concerns regarding hedge cutting saying that it is too severe and cuttings are left on the road

*“not trimmed enough compared to SBC areas”*

**LOW PRIORITY**

### Road Signs

Although the majority feel there is no need for further or improved signage, there are concerns regarding lack of clear signage to Crosscliffe and a need for more ‘slow down’ signs when approaching houses.

**LOW PRIORITY**

## Development in the Parish

Only 9 households answered this question but all these indicated that they would wish the parish to manage its own evolution.

*“Yes so long as they know our part of the parish”*

## Communication



### Broadband

All but 3 households use Broadband at home and all of them are dissatisfied with the speed and reliability. There are concerns about the cost of Broadband and that the service was poor and was often unavailable.

*“BT struggle to keep it going, it needs fibre optics”, “sometimes very slow and will freeze”*

### Mobile Phones

Only 4 households receive a good mobile signal at home. There are only a few places in the area where a reliable signal can be received.

*“we obviously need a reliable mobile phone service for emergencies out here”*

**HIGH PRIORITY**

## Parish Action Plan

<u>ISSUE</u>	<u>PRIORITY</u>	<u>RECOMMENDATION FOR POSSIBLE ACTION</u>	<u>PARTNERS</u>	<u>LEAD RESPONSIBILITY</u>	<u>RESOURCES/FUNDING</u>
<b>1.</b> Better street lighting	Low	Maintain current provision.	Highways and Parish Council	Parish Council	
<b>2.</b> Traffic speed control	High	Work with relevant authorities to investigate possible solution.	Parish Council/Highways	Parish Council	
<b>3.</b> Maintenance of road surfaces/winter clearance	High	Work with relevant authorities to investigate possible solutions.	Parish Council/Highways/Ryedale Council	Parish Council	
<b>4.</b> Better drainage to stop flooding	High	Investigate volunteer work party options to clear stream bed.	Parish Council +volunteers	Parish Council	
<b>5.</b> Footpaths around bottom of village and to Snainton	High	Work with relevant authorities and investigate volunteer work parties.	Parish Council/Highways	Parish Council + Highways + County Council	
<b>6.</b> More dog bins	Low	Maintain current provision.  Investigate publicity of sites.	Parish Council	Parish Council	

## Parish Action Plan

7.	Improve play area/sports field	Low	Share findings with the Sports field Association and encourage to maintain current provision.	Sportsfield Association	Chair of Sportsfield Association
8.	Village tidy campaign	High	Investigate volunteer work party options.	Parish Council	Lead volunteer
9.	Ebberston Directory	-----	Provision of website be reviewed then directory could be linked to it. Ask for volunteers from each section of village to be aware of comings and goings within own section and give out directory as needed.	Parish Council + volunteers	Needs a Lead Volunteer
10.	Bigger and better newsletter	Meeting held	Volunteers	Parish Council+ volunteers	Judith Winters and Helen Watson
11.	More community events	Low	No action needed.		

## Parish Action Plan

<b>12.</b>	More recreational events in the village hall	Low	No action needed.	
<b>13.</b>	Library in the village hall	-----	Advertise the second hand books available in chapel every third Wednesday. Investigate running a bookstall one evening per month?  Investigate "Take One-Leave One" scheme and where?	Community coffee morning + chapel (Helen Leng)  Parish Council  Helen Leng
<b>14.</b>	A village shop	High	Investigate setting up a volunteer work party re viability.	Parish Council+ volunteers  Parish Council
<b>15.</b>	Neighbourhood Watch Scheme	High	Maintain current provision.	Parish Council + NW Co-ordinators  NW Leader and co-ordinators
<b>16.</b>	Access to Dalby Forest	-----	Negotiate free out of season pass/low rate for parishioners (parishes bordering the forest). Instigate a meeting between Forestry Commission and parishioners.	Parish Council+ Forestry Commission  Parish Council

## Parish Action Plan

<b>17.</b>	Better planning controls for the village	High	How can the Parish Council properly address this issue?	Parish Council+ RDC	Parish Council
<b>18.</b>	Managing future change	High	How can the Parish Council properly address this issue?	Parish Council+ RDC	Parish Council
<b><u>BICKLEY</u></b>					
<b>19.</b>	Concerns regarding potholes in local roads.	<b>High</b>	Make NYCC Highways aware of this issue.	NYCC Parish Council	Parish Council NYCC Highways
<b>20.</b>	Illegal use of public rights of way.	High	Notify Police, Forestry Commission and NYMNPA and request patrols in area.	Parish Council, Police, Forestry Commission, NYMNPA	Parish Council
<b>21.</b>	Verges	Low	To be cut more frequently (1 more cut?) particularly on corners to improve visibility.	Parish Council	Parish Council
<b>22.</b>	Signage in Crosscliffe	Low	Parish Council to ask NYCC to look at signage with a view to improving it.	Parish Council+ NYCC	Parish Council
<b>23.</b>	Broadband reception	High	Look at ways of receiving Broad band from other sources	NYCC Parish Council	Could NYCC help with this? Parish Council

**Steering Group:**

Helen Leng, Lynne Hall, Steve Willby , Ian Newman, Grahame Walker, Margaret Farey

**Ebberston with Yedingham  
Parish Council**

*Clerk:* Andrew Wyatt

17 Main Street, Ebberston, Scarborough YO13 9NR

Email: [ebberstonpc@btinternet.com](mailto:ebberstonpc@btinternet.com)